

# Nature By Design

Outdoor Education Adventures and Expeditionary Learning Programs

209.607.8455 • Fax: 209.369.7227

dwyrick@goldrushcs.com • <http://www.naturebydesignlearning.com>

## Field Science Investigations: Foothill Wild Flowers



Spend a day exploring nature's spring wild flower show at Red Hills Area, starring golden poppies, lupines, brodiaeas, larkspurs, bitterroot, baby blue eyes, and a host of other spring wild flower species. Students will learn how to identify common wild flower families and used field identification keys to determine the identity of the flowers they observe. Digital cameras are highly recommended as students will be making a photo journal of their experience.

**March 24, 2010 (SIGN-UP BY MONDAY, MARCH 22)**

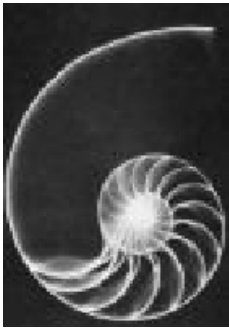
**Cost: No cost to students**

***This Field Trip is required for all Biology students.***

***Yes, I plan to participate in this Field Trip. Please reserve a place for me.***

**Student Signature** \_\_\_\_\_ **Date** \_\_\_\_\_

**Parent Signature** \_\_\_\_\_



# Nature By Design

Outdoor Education Adventures and Expeditionary Learning Programs

209.607.8455 • Fax: 209.369.7227

dwyrick@goldrushcs.com • <http://www.naturebydesignlearning.com>

## SCIENCE FIELD INVESTIGATIONS

### Red Hills Wild Flower Exploration

March 24, 2010

9:00 A.M. Leave Gold Rush Charter School

9:30 A.M. Arrive at Red Hills – main picnic/parking area and trail head

10:00 A.M. Orientation

10:15 A.M. Wild Flower Identification

11:00 A.M. Wild Flower Collection #1

**12:00 P.M. LUNCH**

12:30 P.M. Wild Flower Collection #2

3:30 P.M. Leave for Home

4:00 P.M. Arrive at Gold Rush Charter School



# Nature By Design

Outdoor Education Adventures and Expeditionary Learning Programs

209.607.8455 • Fax: 209.369.7227

dwyrick@goldrushcs.com • <http://www.naturebydesignlearning.com>

## WHAT TO BRING:








- ❑ COMFORTABLE CLOTHING
- ❑ COMFORTABLE WALKING SHOES
- ❑ HAT
- ❑ SUN SCREEN
- ❑ WATER
- ❑ LIGHT JACKET
- ❑ SACK LUNCH
- ❑ CLIP BOARD
- ❑ PEN OR PENCIL
- ❑ DISPOSABLE CAMERA OR DIGITAL CAMERA (YOU WILL WORK WITH A PARTNER)

# BLM Red Hills ACEC Directions and Map

## Highway 108 (from the north)

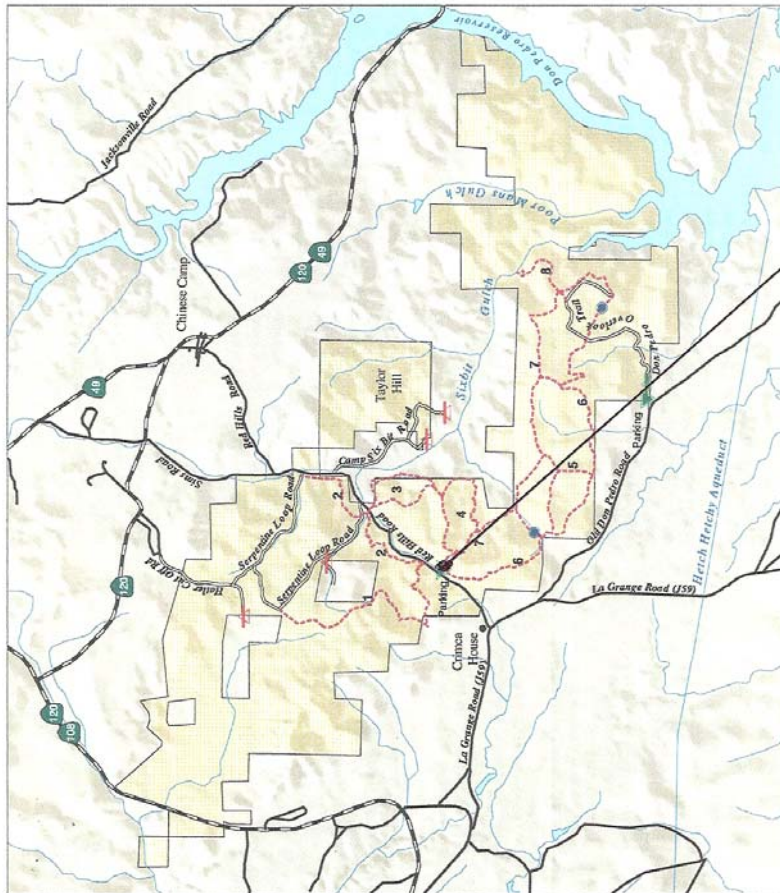
Take CA Highway 108 south out of Sonoma. Turn left onto CA Highway 120 towards Yosemite. Travel about 2 miles and turn right onto Sims Road. Drive about another 2 miles to the Parking Lot/Picnic Area and Trailhead. This is where we will be working.


### Red Hills Area of Critical Environmental Concern

- |   |                                |
|---|--------------------------------|
|  | BLM Public Land                |
|  | Trails                         |
|  | Paved Road                     |
|  | Unpaved Road                   |
|  | Gate (No public access)        |
|  | Gate (Administrative use only) |
|  | Stock Water Source             |
|  | Parking                        |
- 
- |                  |
|------------------|
| <b>Trails:</b>   |
| 1 Railroad Grade |
| 2 Red Hills      |
| 3 Verbena Loop   |
| 4 Overlook Loop  |
| 5 Butternut      |
| 6 Old Stage      |
| 7 Soaproot Ridge |
| 8 Six Bit        |



  
 U.S. Department of the Interior  
 BUREAU OF LAND MANAGEMENT  
 OFFICE  
 (516) 858-4474  
[www.ca.blm.gov/cedm](http://www.ca.blm.gov/cedm)  
 Prepared: 03/22/02



  
 1 0 1 2 Miles  
*Where we will meet*