



# Golden Nugget

14673 Mono Way \* Sonora, CA 95370 \* Phone: (209) 533-8644 \* Fax: (209) 532-9234

## A Note From the Principal

Here is a short overview of our educational program. The goal of Gold Rush is to educate any student who chooses to enroll in its Personalized Learning Program, after it is determined that we are the best program for your student. As much of the learning takes place away from the Gold Rush site, it must be determined that the student has the appropriate support system at home to be successful. Gold Rush recognizes that the world we live in is constantly changing with continual growth in technology. In order to be an educated person in the 21<sup>st</sup> century, one must be flexible, know one's strengths and weaknesses, and be aware that learning is a continual process. It is our desire and objective to enable students to become self-motivated, competent and life-long learners. We provide many workshops and classes to provide, not only basic skills and knowledge, but special interest and cross-curricular experiences to stimulate curiosity and awareness of interrelatedness of all learning. Gold Rush attempts to provide an environment of excitement about learning with many qualified, enthusiastic teachers.

Each student will have an assigned instructor with whom the student/parent will meet to turn in work and receive assignments. Concerns about curriculum or requests for extra assistance should be discussed at these meetings.

High school students will be informed about the courses and graduation requirements. Graduation requirements for both the Standard and Academic Diploma are published in the Parent/Student Handbook which is given to each student upon enrollment.

High school students will receive 5 credits per course per semester for successful completion. High school credits are based on a work load of 15 hours of work per credit. Gold Rush uses texts aligned to California State content standards. Gold Rush does issue partial credit, as some students take more to complete a course, or move here from another institution before completing a course. It is up to other enrolling schools to determine whether or not to allow the partial credit. Gold Rush staff cooperates with other schools in sharing transcript and other information

Students are placed in grade levels according to number of credits earned rather than age. They must earn the required units and pass the high school exit exam in order to graduate. Retention in elementary grades is determined by the parents and teacher together.



Kathleen Hansen  
Principal



## FIELD TRIPS

*High Sierra Picnic (Dardanelle, CA)  
Grades 5-8  
Tuesday, September 23rd  
8:00 a.m. - 3:00 p.m.  
(Please meet in Excelsior at 8:00 a.m.)*

*High Sierra Picnic (Dardanelle, CA)  
Grades 9-12  
Wednesday, September 24th  
8:00 a.m. - 3:00 p.m.  
(Please meet in Excelsior at 8:00 a.m.)*



*This field trip is open to all family members that would like to join us. You and your family may bring your own lunch or pay \$5 per person for deli lunch. You may sign up for this field trip in the lobby area on the bulletin board no later than September 17th. See map on bulletin board.*

**Gold Rush Charter School**  
**Schedule of Classes**  
 Revised 08/28/08

	<b>Class</b>	<b>Day</b>	<b>Time</b>	<b>Teacher</b>	<b>Room</b>
1	Spanish - HS	<b>Mon</b>	9:00 – 10:30	Benton	Bonanza
2	Spanish MS	Mon	11:00 – 12:00	Benton	Country School
3	Algebra 1b	Mon	10:30– 12:00	Elias	Bonanza
4	Algebra 1a	Mon	10:30 – 12:00	Hansen	Excelsior
5	Earth Science – Lecture	Mon	12:30 – 1:30	Barrieau	Bonanza
6	English 1	Mon	1:30 – 2:30	Blake	Excelsior
7	Fitness Office HoursHHH	<b>Tues</b>	8:30 – 10:00	Walker	Office
8	Senior Project	Tues	9:30 – 10:30	Carr	Grizzly
9	Integrated Science – Lab	Tues	9:00 – 10:30	Wyrick	Bonanza
10	Algebra 1a	Tues	9:00 – 10:00	Blake	Excelsior
11	Earth Science – Lab	Tues	10:30 – 12:00	Wyrick	Bonanza
12	Biology Lecture	Tues	10:30 – 12:00	Elias	Excelsior
13	Writing/English III	Tues	10:30 –12:00	Walker	Grizzly
14	Health	Tues	1:00 – 2:00	Barrieau	Bonanza
15	English II	Tues	12:30 – 2:00	Walker	Excelsior
16	Senior Study Hall	Tues	1:00 – 2:30	Carr	Grizzly
17	Fitness	Tues	2:15 – 3:00	Walker	Excelsior
18	English 1	Tues	2:00 – 3:00	Blake	Bonanza
19	Middle School Spanish	<b>Wed</b>	9:00 – 10:30	Benton	Country School
20	Algebra 1b	Wed	9:00 – 10:30	Elias	Grizzly
21	MiM Middle School Science	Wed	10:30 – 12:00	Wyrick	Country School
22	Technology Lab	Wed	10:30 – 12:00	Britt	Grizzly
23	Geometry	Wed	11:00 – 12:00	Elias	Bonanza
24	Art / Drawing	Wed	1:00 – 2:00	Barrieau	Excelsior
25	Biology - Lab	Wed	1:00 – 2:30	Wyrick	Bonanza
26	Journalism	Wed	2:00 – 3:00	Blake	Grizzly
27					
28	Integrated Science - Lecture	<b>Thurs</b>	9:00 –10:30	Barrieau	Excelsior
29	Writing/English II	Thurs	9:00 – 10:30	Owens	Bonanza
30	Photography	Thurs	9:00 – 10: 30	Benton	Grizzly
31	World History	Thurs	10:30 – 12:00	Gallno	Excelsior
32	Senior Seminar	Thurs	10:30 – 12:00	Carr	Grizzly
33	English III	Thurs	10:30 – 12:00	Owens	Bonanza
34	Psychology	Thurs	11:00 – 12:30	Hohengarten	Hidden Treasure
35	U.S. History	Thurs	1:00 – 2:00	Gallno	Excelsior
36	Senior Study Hall	Thurs	1:00 – 2:30	Carr	Grizzly
37	Business 1 A	Thurs	2:00 – 3:00	Gallno	Excelsior
38	Geometry	Thurs	2:00 – 3:00	Elias	Bonanza



# GOLD RUSH COUNTRY SCHOOL



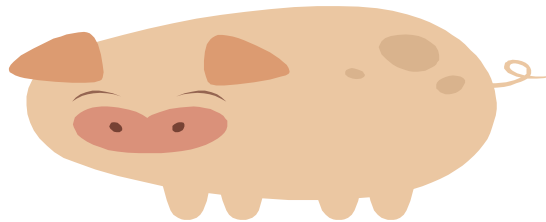
Welcome to the country school! As farm and garden coordinator, I am looking forward to a busy year at our year-old site. We will continue to nurture our goats, our pot bellied pig, Wilbur and our chickens, but we will also be getting some sheep, rabbits and a tortoise for our children to learn about and care for. We will start our garden this fall, and hope to get some equipment through various gardening grants. If you have any expertise in the garden or any materials or seeds to donate, please contact us. We will be happy to have your help in our garden. We are excited about expanding our country school this year to include 6, 7, and 8th graders taught by me (algebra and literature) Niurka Benton (Spanish), Dan Wyrick (science) and Cyndi Owens (social studies). We will join Shannon Owens and Natalee Ribble who pioneered the country school last year and will continue with K-5th. We will also have tutoring for those students that need extra help in math and writing on Fridays. This is a new program and we should have a wonderful year with many hands on activities. Come have a look and join us for an exciting year of hands-on learning!

Cheryl Divine  
cdivine@goldrushcs.com

Shannon Owens (K-5)  
Teacher.owens@gmail.com

Cyndi Owens (6-8)  
Cowens123@gmail.com

Country School Phone 588-8477



## GOLD RUSH COUNTRY SCHOOL WANTED ITEMS FOR DONATION

Dear Gold Rush Families and Community,  
We will be writing grants for various gardening tools and supplies, but until then, can you help us get started? Thank you, Cheryl Divine-Jonas



### TOOLS

Rakes  
Shovels  
Trowels

### MISC.

labeling stakes      seed starter trays  
green tie tape      1/4 " mesh heavy wire cage (or rolls)  
potting soil      (for gopher protection)

### SEEDS OR STARTER PLANTS:

**For our "sensory" garden:** *Mint, Lambs ears, Rattlesnake grass, Lemon balm, Lemon geranium, and various kitchen herbs*

**For our Greek and Roman thematic unit :** *Olive tree, Grape vines*

**For our general garden for fall planting:** *Onions (bunching) Artichokes, Asparagus, Broccoli, Carrots, Cauliflower, Celery, Lettuce, Peas, Spinach*

All items may be dropped off at our country school site at Grace Baptist Church, 19765 Grace Way, Sonora (turn at Via Este). Thank you very much for your donations!!!

# COUNTRY/FARM SCHOOL SCHEDULE revised 8-21-08

TIME	MONDAY	TUESDAY	WEDNESDAY	THURSDAY	FRIDAY
9:00-9:10	Morning Gathering K-8	Morning Gathering K-8	Morning Gathering K-8	Morning Gathering K-8	Morning Gathering K-8
9:10-9:20	Farm and Garden chores K-8	Farm and Garden chores K-8	Farm and Garden chores K-8	Farm and Garden chores K-8	Farm and Garden chores K-8
9:30-11:00 + breaks	Social Studies 6-8 <sup>th</sup> <b>C.Owens</b>	Lang. Arts 6-8 <sup>th</sup> <b>C. Divine</b> (5 <sup>th</sup> 10-11:00)	Social Studies 6-8 <sup>th</sup> <b>C. Owens</b>	Lang. Arts 6-8 <sup>th</sup> <b>C. Divine</b> (5 <sup>th</sup> 10-11:00)	Tutorial lab (Math) and Special projects <b>C.Divine/ C. Owens</b> 6-8 <sup>th</sup>
11-12:00	Spanish 6-8 <sup>th</sup> <b>N.Benton</b>	Pre-Algebra 6-8 <sup>th</sup> <b>C. Divine</b>	Science 6-8 <sup>th</sup> <b>D. Wyrick/ Staff</b>	Pre-Algebra 6-8 <sup>th</sup> <b>C. Divine</b>	Tutorial lab (Lang. Arts) and Special projects <b>C.Divine/ C.Owens</b> 6-8 <sup>th</sup>
12-12:45	Lunch and recess	Lunch and recess	Lunch and recess	Lunch and recess	Lunch and recess
12:45-1:00	*SSR	*SSR	*SSR	*SSR	*SSR
1-1:15	*filling	in	lesson	planners	*
1:15-2:00	Afternoon* <b>C.Divine S.Owens</b>	activities* <b>C.Divine S.Owens</b>	farm* <b>C.Divine S.Owens</b>	and* <b>C. Divine S. Owens</b>	garden* <b>C. Divine S. Owens</b>

## NOTES:

\*1-8 all school (kindergarten leaves at noon)

SSR= sustained silent reading

Filling in lesson planners is M-F

Morning gathering (on rock landing) = patriotic songs, announcements, movement

+ Morning Breaks K, 6<sup>th</sup>-8<sup>th</sup> 10:30-10:45, 1<sup>st</sup>-5<sup>th</sup> 10:45-11:00

Special projects = applied math, science, art, social studies and language arts projects in farm and garden

## WORK EXPERIENCE



Work Experience is going to be a great experience this year! Together we will be learning what is involved in being not just a good employee, but a GREAT one! We will be concentrating on work ethics, business responsibilities, and the maturing process of transforming from a student to a working adult.

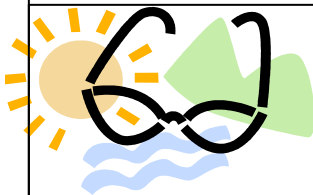
The format this year will be different. For class time, we will be meeting every third Friday of each time period. For homework, it will be posted on my website at [www.goldrushcs.com](http://www.goldrushcs.com) each weekend. The assignment will be emailed to me by the end of each week. This will be similar to an online course.

Another addition is work experience orientation. This is required to take when a job has been secured. We will be discussing Child Labor Laws, dressing for success, and other issues that may be a concern to new hires as well as employers when a student starts a new job.

It is my goal that every student that takes part of work experience will walk away with more than just a paycheck. It is my goal that when they graduate from Gold Rush Charter School they will be a conscientious employee and a responsible adult ready and able to survive in the working world.

Lisa Hobbs  
Work Experience

**Gold Rush is starting a fitness program. We are in need of a few items. If you have any of these lying around, please contact Jeni Walker at [jwalker@goldrushcs.com](mailto:jwalker@goldrushcs.com) or 533-8644 ext. 551. We are in need of stationary bikes, body balls, free weights, and aerobic steps.**



**Hearing & Vision Screening dates, times and the location have changed!**

**These screenings will be done for grades K, 2, 5, & 8. Also, the nurses will screen resource students in any grade!**

**Hearing Screening:** Thursday, October 2 at 8:30-9:00 AM at our Country School.

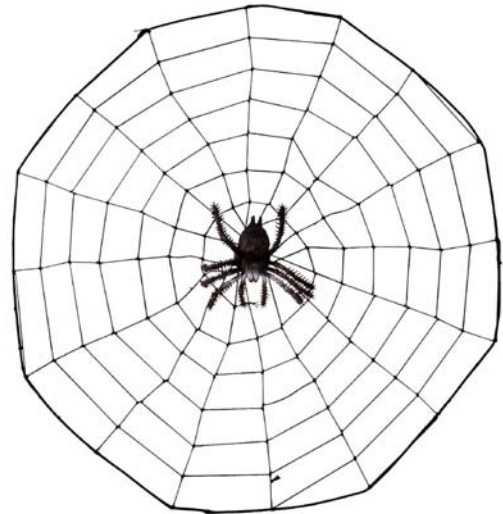
Hearing re-check will be on Thursday, October 23 at 8:30 AM at our Country School.

**Vision Screening:** Wednesday, November 5 at 8:30 AM at our Country School.

Vision re-check will be on Thursday, November 20 at our Country School.

# SCIENCE CORNER

**Q: Why do spiders get caught in their own webs?**

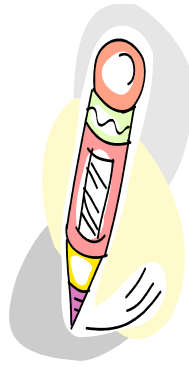


**A: “Spiders make many different kinds of silk for different purposes,”** says Susan J. Weller, associate professor in the Department of Etymology and curator of Lepidoptera at the Bell Museum. “They use a strong, non-sticky silk for the main components of their webs and another capturing their prey. They don’t get caught in their webs because they walk on the non-sticky silk or lower themselves on a separate silk line, carefully avoiding the sticky part.”

If you want to pose your own questions to University of Minnesota experts, or if you want to read other intriguing answers, go to

**[www.discover.umn.edu](http://www.discover.umn.edu)**

**Gold Rush  
Charter School**



***Important Newsletter from  
Gold Rush Charter School***

14673 Mono Way  
Sonora, CA 95370

Phone: (209) 533-8644

Fax: (209) 532-9234

Website:

[www.goldrushcs.com](http://www.goldrushcs.com)

Questions/requests can be e-mailed to Sue, newsletter editor. Thank you.

E-mail to:

[sueofriend@aol.com](mailto:sueofriend@aol.com)

**A Personalized  
Learning Plan**

# September 2008

	1	2	3	4	5	6
	Labor Day!	First Day of School				
7	First Day of Classes	8	9	10	11	12
14	15	16	17	18	19	20
21	22	23	24	25	End of Learning Period 1	26
28	29	30	No classes September 1-5, please work on starter packets.			